

Fraser River Sockeye In-season Update –July 29, 2025

The below is a summary of the July 29 Fraser Panel Meeting. For specific details please refer to the Fraser Panel distribution from the call. This is the sixth in-season meeting of 2025 and information is building. Mission hydroacoustic and marine and in-river test fisheries have been running for a several weeks with recent seines showing strong, early results. Strong, early-season returns for Early Stuarts were observed across the assessment programs, with variable migrations conditions experienced by this stock. Only July 18 the panel adopted an in-season Early Stuart run size of 725,000 with a pMA of 1.86. Early Summers are tracking slightly above expectations with variability among stocks. Summers are building in marine waters with strong early results. Pinks are starting to show in outer marine waters. Water temperatures are above average and discharge remains near record lows which could increase en route loss. No further recommendation were provided at this time. Information will be further evaluated during the tech meeting on July 31. If you have any questions or notice any errors in the summary, please contact Colin.Schwindt@dfo-mpo.gc.ca so that adjustments can be made.

2025 Run Status of Fraser Sockeye:

The information presented in this distribution has been prepared by PSC Secretariat staff and should be considered preliminary until reviewed by the Fraser River Panel

Week of: Jul. 27 - Aug. 2, 2025	Sockeye				
	Management Group				Total Fraser
	E.Stuart	E.Summer	Summer	Late	
Mission passage (inclds Pitt, Alouette, Coquitlam)	734,400	66,300	81,300	500	882,500
Catch downstream of Mission	3,900	800	1,900	0	6,600
Accounted Run To Date	738,300	67,100	83,200	500	889,100
Run size adopted in-season ¹	725,000	na	na	na	na
Run size forecasted pre-season	116,000	221,000	2,136,000	468,000	2,941,000
Area 20 timing adopted in-season	6-Jul	na	na	na	na
Area 20 timing expected pre-season	8-Jul	3-Aug	15-Aug	20-Aug	14-Aug
Johnstone Str. Diversion Rate				In-season 5-day average	43%
				Preseason forecast of annual rate:	64%

¹ Run sizes are usually not adopted until after the peak of the run has passed through marine test fishery areas in Juan de Fuca and Johnstone straits.

- Total run accounted to date is 889,100 Fraser Sockeye most of which are Early Stuarts, with Early Summers and Summers building.
- The Early Stuart run size has exceeded all forecasts. Abundance in the marine and lower river is declining as the stock migrates up river. A protracted tail of run is also being observed.
- Overall, Early Summers are tracking slightly above expectations with Chilliwack tracking below and Nadina and Thompson above.
- Summers are building in marine areas showing strong early results.
- 43% of the run is currently migrating north through Johnstone Straight.

In-season Data Flow

Acoustics

- **Qualark:** Hydroacoustics have been running for almost a month with strong early results. Average daily passage began strong (>1,000) increasing to 50k, with recent passage starting to decline to 20k as E. Stuarts migrate further upstream.
- **Mission:** counts also started strong increasing to a peak of 67k on July 10 followed passage declining to 15k. Recent passage has been increasing to 57k as Summers build in river. Average daily comparable passage (accounting for 2-day offset to Qualark) since the last update has increased to 20,000 per day.

Test fishing catch

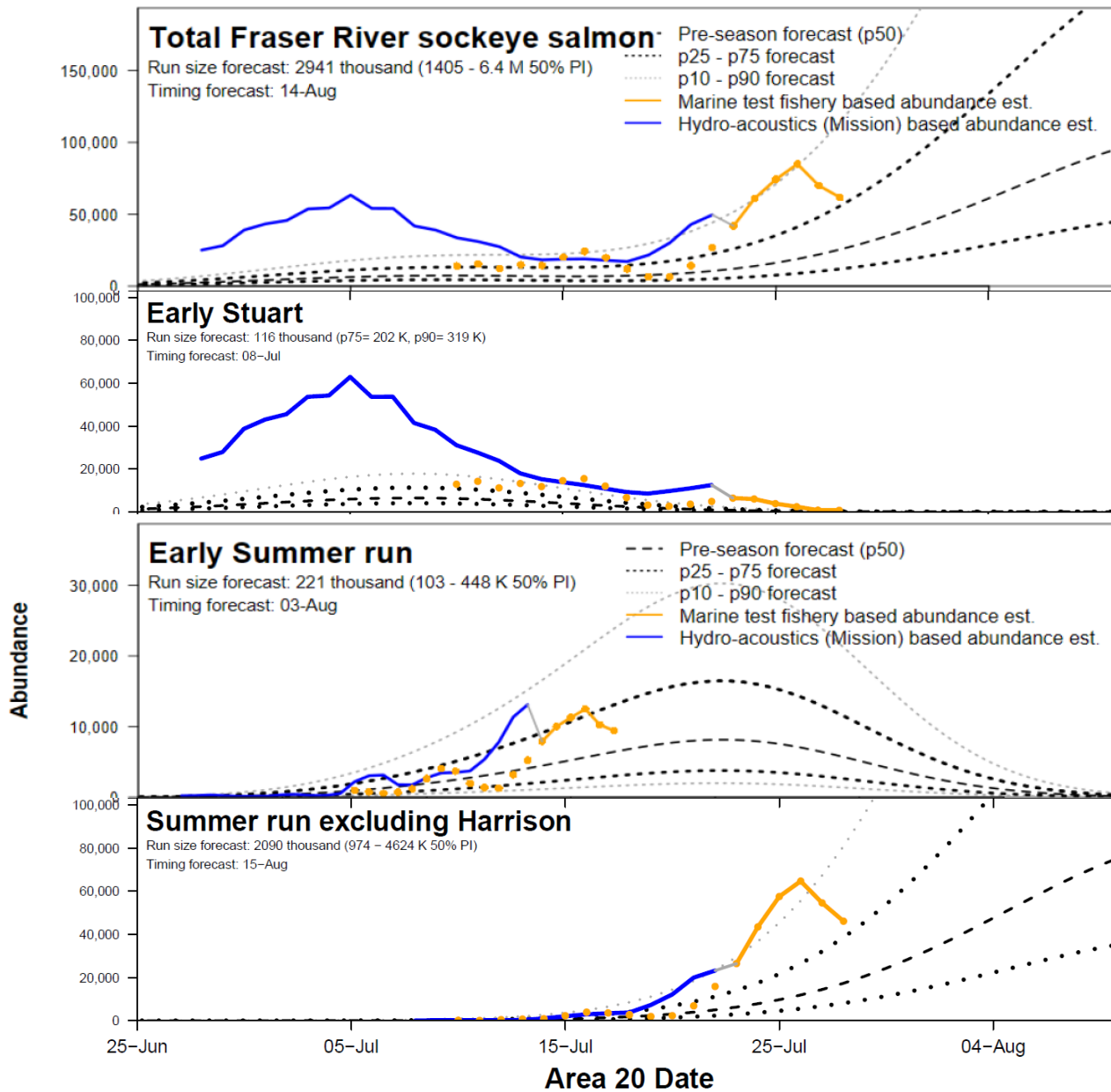
- **Marine Area:** A12 GN started Jul 8 with a peak catch of 69 on July 10 followed by declining catches with recent catches picking up as Summers build. A12 Purse seine started on July 24 with strong catches in its first few days. A20 started July 10 with strong catches (200 – 300) early on with recent declines. A20 purse seines started on July 25 with strong catches followed by recent declines.
- **Fraser River:** Whonnock is operational as of June 25 with above average catches observed earl, followed by a dip and recent catches increasing sharply. Brownsville also began strong on July 10 (207) as E. Stuarts entered and have increased again as Summers enter the river.

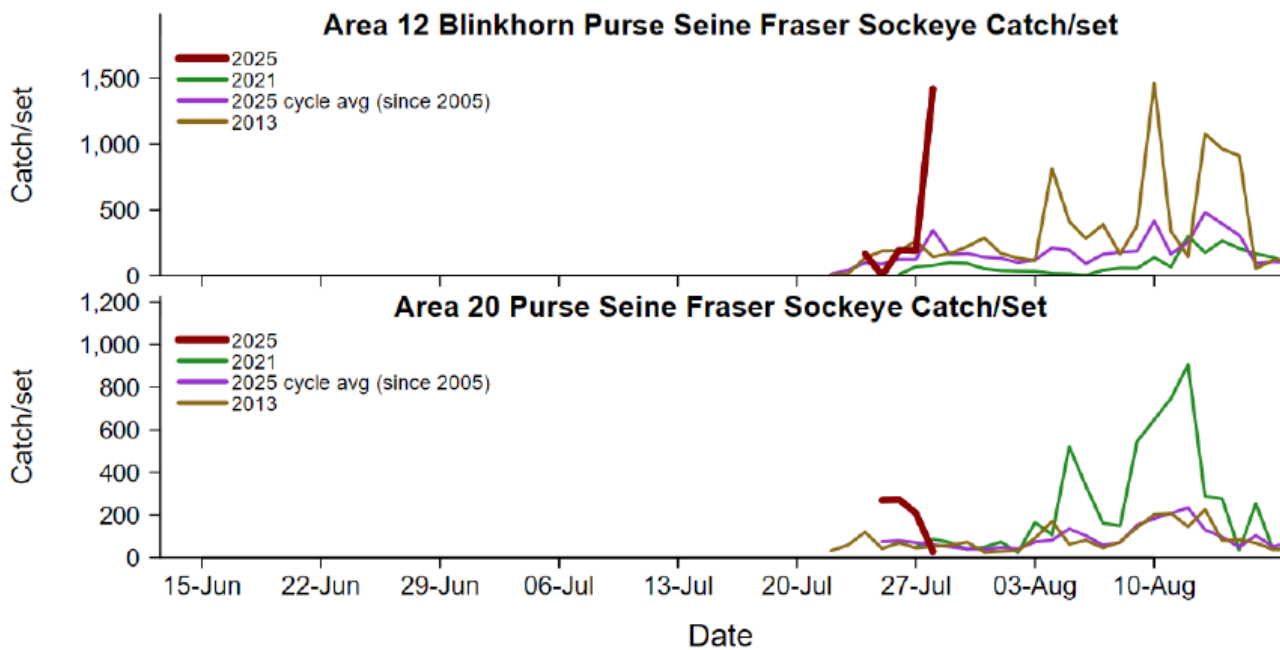
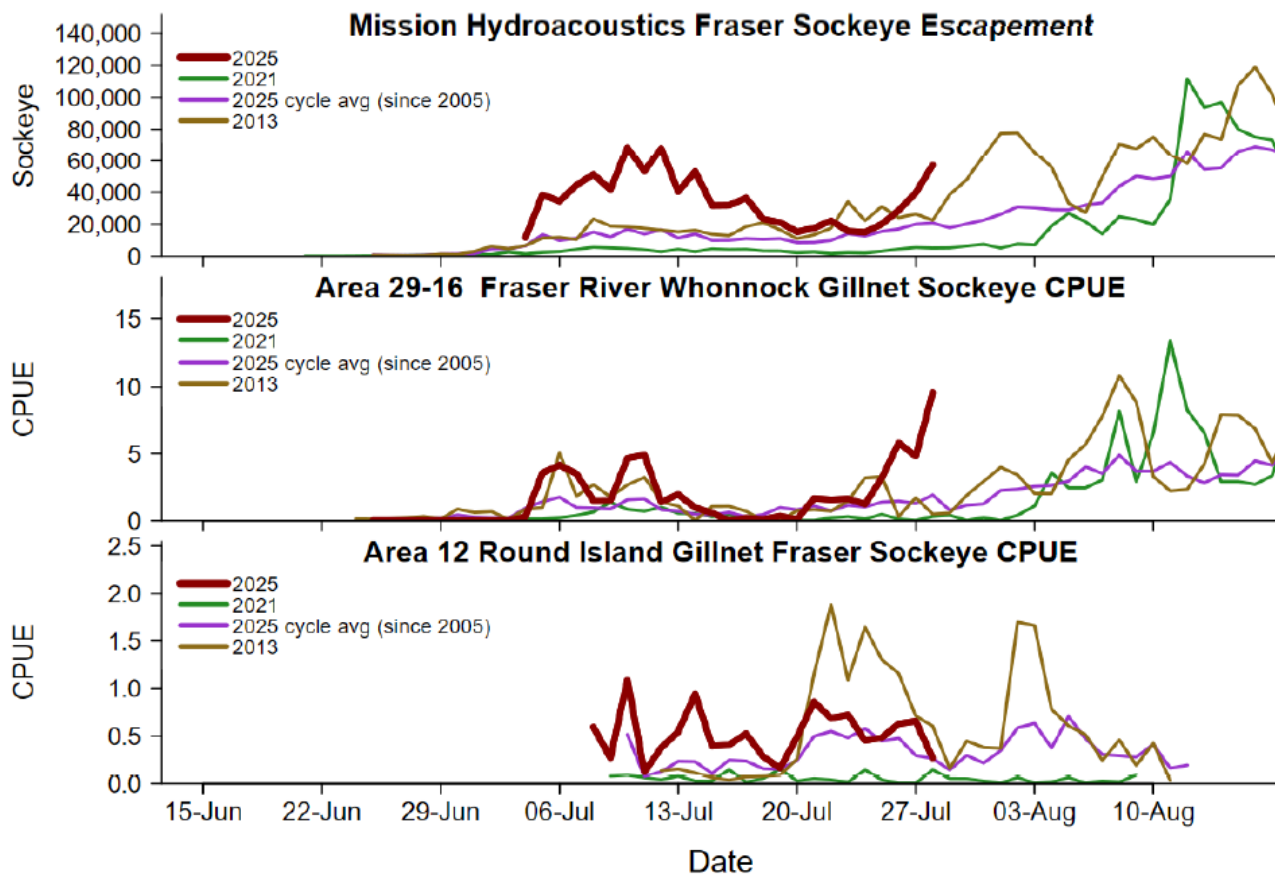
Stock Proportions

- **Marine Area:** Marine samples for July 25-27 indicate ~78%% are Summers with E. Stuart through the area and small amounts (20%) of E. Summers observed.
- **Fraser River:** In river samples for July 27 indicate E. Stuarts are trailing off (25%) and Summers (50%) and E. Summers (25%) are starting to build. Almost all fish are 4 YO.

Chilcotin Slide Area Update

- Monitoring of the area is ongoing, weekly updates are provided to the FRP on Fridays
- Several small sloughing events have occurred in the area resulting in short-term increases in turbidity.
- Sonar stations are in place above the area to monitor potential passage delays. No passage delay conditions were observed during the week of July 25

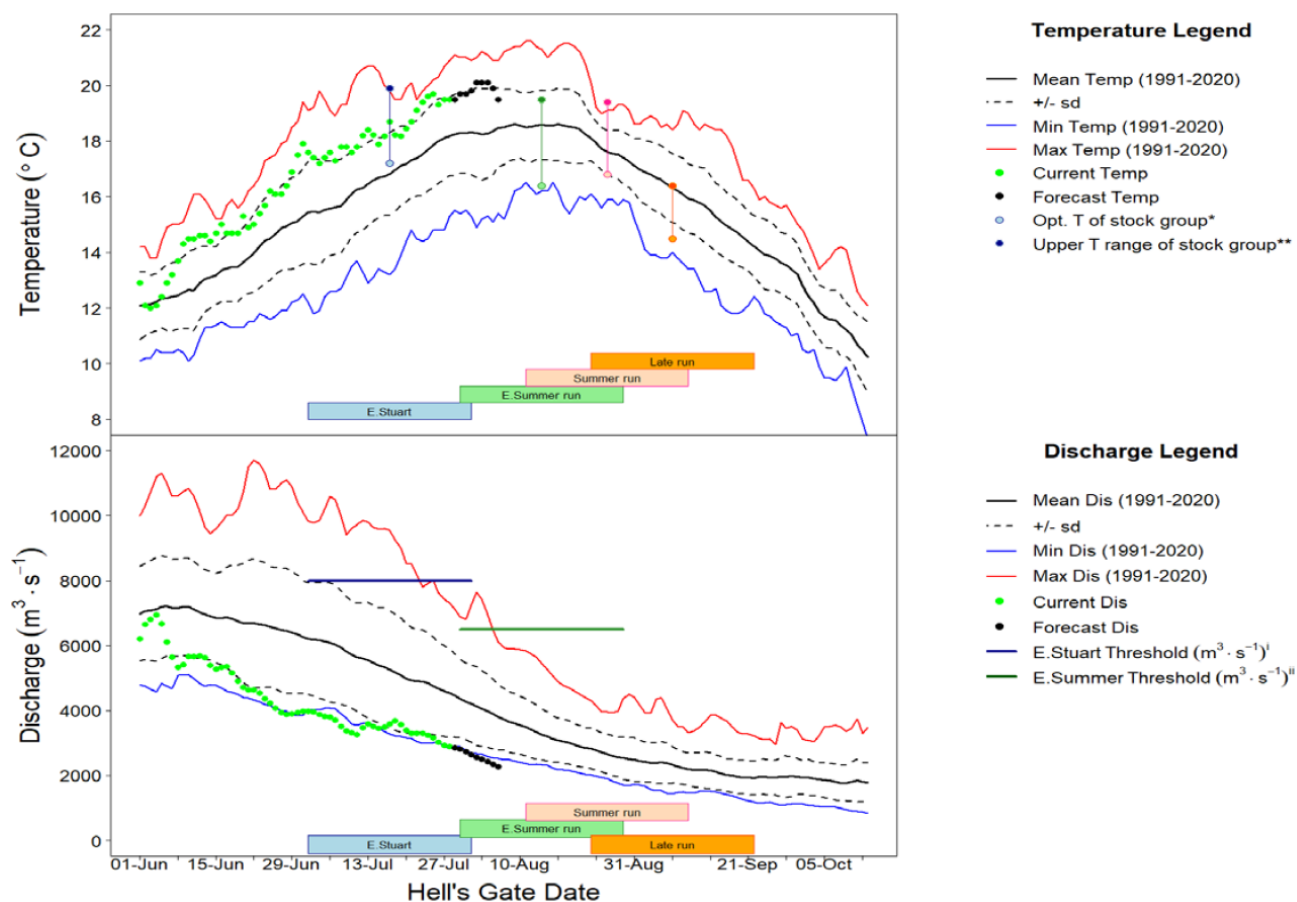




Environmental Conditions and Management Adjustments

- The high temperature of the Fraser River at Qualark on July 24 was 19.5°C, which is 1.3°C above average. Temps are projected to increase slightly across the watershed over the weekend.
- The Fraser River discharge at Hope was 2,494 m³/s, which is approximately 33% lower than historical average. Discharge is not posing passage issues at this time.
- High water temperatures combined with low discharge are expected to increase on-route loss as the season progresses.

Fraser River Migration Conditions



Observations Throughout the Watershed

- Updates are provided on Fridays. Catches from Qualark and mid-river inspections indicate the majority of fish (>90%) are in good condition with no signs of marks or damage.

Assessments and Recommendations

Early Stuarts

- Returning higher than expected but migration conditions declined over the past week. An in-season run size of 725,000 with a pMA of 1.86 was adopted on July 18.

Early Summers

- No changes to preseason estimates

Summers

- No changes to preseason estimates

Lates

- No changes to preseason estimates

Management Group	Run Size	Timing A20 50%date	Proportional Mngt. Adjust. ^a	Available Harvest ^b	Allowable Incidental Harvest ^c
Early Stuart (Pre-Season)	116,000	8 July	1.17	0	11,600
Early Stuart (Adopted In Season)	725,000	6 July	1.86	0	72,500
Early Summers (Pre-Season)	220,000	3 Aug	0.54	9,600	N/A
Early Summers (Adopted In Season)	No Change	No Change	No Change	No Change	No Change
Summer (Pre-Season)	2,137,000	15 Aug	0.28	235,000	N/A
Summer (Adopted In Season)	No Change	No Change	No Change	0	No Change
Late (Pre-Season)	468,000	20 August	1.56	0	46,800
Lates (Adopted In Season)	No Change	No Change	No Change	0	No Change

^a Proportional Management Adjustment is multiplied by the escapement target to calculate the numerical management adjustment.

^b Available harvest after deductions. Harvest includes all catch in all fisheries in Canada the United States and test fisheries. CTAC will be assessed in-season.

^c Incidental allowable harvest in a LAER scenario. Incidental harvest is not a target and would be considered a maximum, includes test fishery catch and may include fishery induced mortalities.

Fishery Recommendations

- no panel area fishery recommendations are being considered at this time.

Other Business

- 2025 Fraser River Panel Management Plan (formerly principles and constraints document) was adopted by Canadian and American caucuses

Next Meeting

- Next Panel meeting is Aug 1, 2025.
- First Panel Tech meeting is July 31, 2025.