

## **Fraser River Sockeye In-season Update –July 25, 2025**

The below is a summary of the July 25 Fraser Panel Meeting. For specific details please refer to the Fraser Panel distribution from the call. This is the fifth in-season meeting of 2025 and information is building. Mission hydroacoustic and marine and in-river test fisheries have been running for a few weeks with marine seines beginning today. Strong, early-season returns for Early Stuarts were observed across the assessment programs, with variable migrations conditions experienced by this stock. Only July 18 the panel adopted an in-season Early Stuart run size of 725,000 with a pMA of 1.86. Early Summers are tracking near expectations with variability among stocks. Water temperatures are above average and discharge remains near record lows. No further recommendation were provided at this time. Information will be further evaluated during the tech meeting on July 31. If you have any questions or notice any errors in the summary, please contact [Colin.Schwindt@dfo-mpo.gc.ca](mailto:Colin.Schwindt@dfo-mpo.gc.ca) so that adjustments can be made.

### **2025 Run Status of Fraser Sockeye:**

The information presented in this distribution has been prepared by PSC Secretariat staff and should be considered preliminary until reviewed by the Fraser River Panel

Week of: Jul. 20 - Jul. 26, 2025	Sockeye				
	Management Group				Total Fraser
	E.Stuart	E.Summer	Summer	Late	
Mission passage (inclds Pitt, Alouette, Coquitlam)	684,700	23,500	11,300	100	719,600
Catch downstream of Mission	3,700	400	500	0	4,600
Accounted Run To Date	688,400	23,900	11,800	100	724,200
Run size adopted in-season <sup>1</sup>	725,000	na	na	na	na
Run size forecasted pre-season	116,000	221,000	2,136,000	468,000	2,941,000
Area 20 timing adopted in-season	6-Jul	na	na	na	na
Area 20 timing expected pre-season	8-Jul	3-Aug	15-Aug	20-Aug	14-Aug
Johnstone Str. Diversion Rate	In-season 5-day average				46%
	Preseason forecast of annual rate:				64%

<sup>1</sup> Run sizes are usually not adopted until after the peak of the run has passed through marine test fishery areas in Juan de Fuca and Johnstone straits.

- Total run accounted to date is 724,200 Fraser Sockeye almost all of which are Early Stuarts, with small amounts of Early Summers and Summers.
- The Early Stuart run size is currently exceeding all forecasts. Abundance in the marine and lower river declining as the stock migrates up river.
- Overall, Early Summers are tracking near expectations with Chilliwack tracking below and others near or slightly above.
- Summers are building in marine areas showing positive early results.
- 46% of the run is currently migrating north through Johnstone Straight.

## In-season Data Flow

### Acoustics

- **Qualark:** Hydroacoustics started on July 1 with the Qualark TF starting on July 2. Average daily passage began strong (>1,000) increasing to 50k, with recent passage starting to decline to 20k as E. Stuarts migrate further upstream.
- **Mission:** Hydroacoustic assessments of daily sockeye passage began July 4. Counts also started strong increasing to a peak of 67k on July 10 with recent passage declining to 15k. Average daily comparable passage (accounting for 2-day offset to Qualark ) since the last update is 18,000 per day.

### Test fishing catch

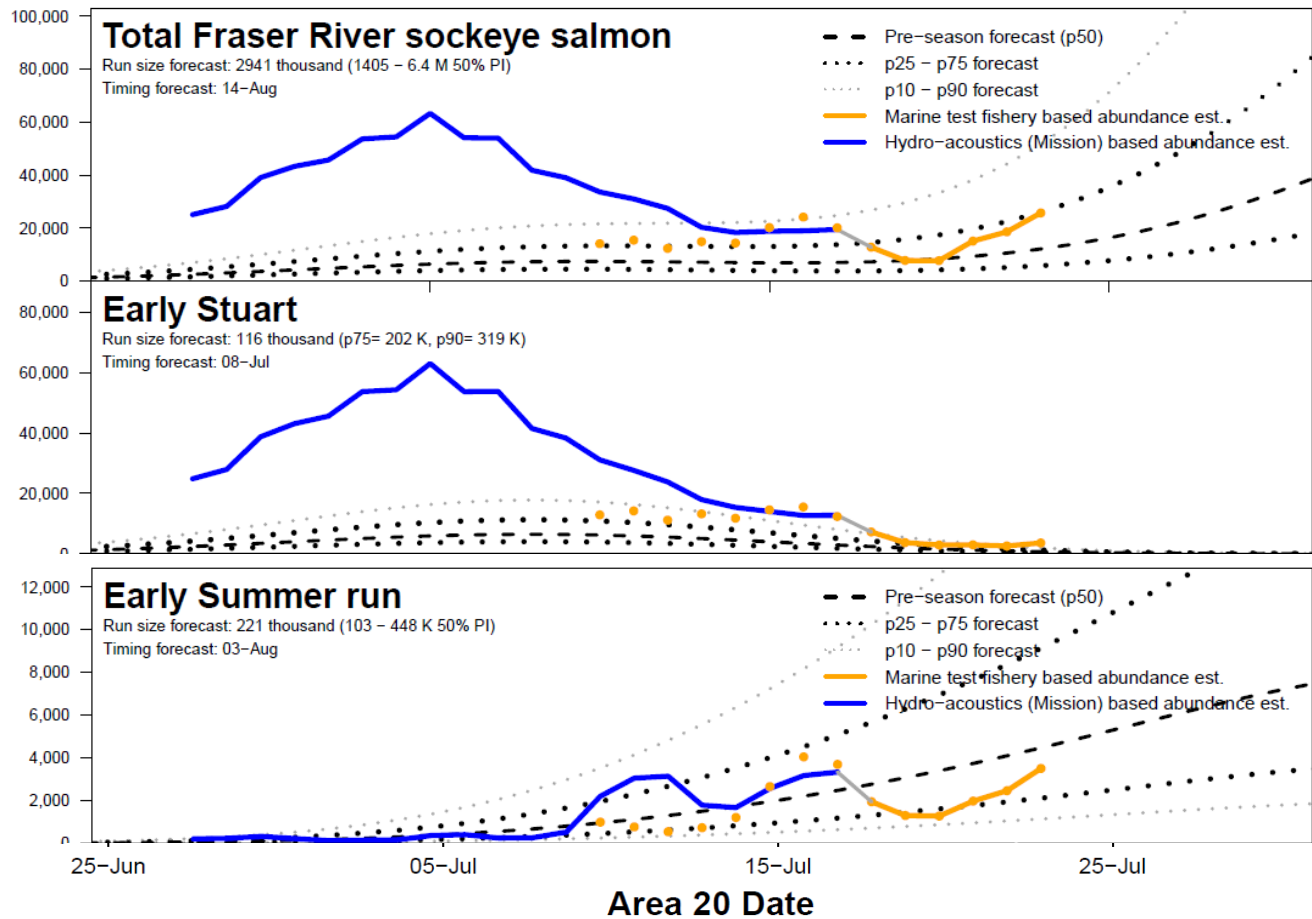
- **Marine Area:** A12 GN started Jul 8 with a peak catch of 69 on July 10 with recent catches declining. A12 Purse seine started on July 24 with strong catches in its first day. A20 started July 10 with strong catches (200 – 300) early on with recent declines. A20 purse seines starts today.
- **Fraser River:** Whonnock is operational as of June 25 with above average catches observed early with recent catches remaining low to average. Brownsville also began strong on July 10 (207) with recent catches declining as E. Stuarts migrate up river and Summers yet to build.

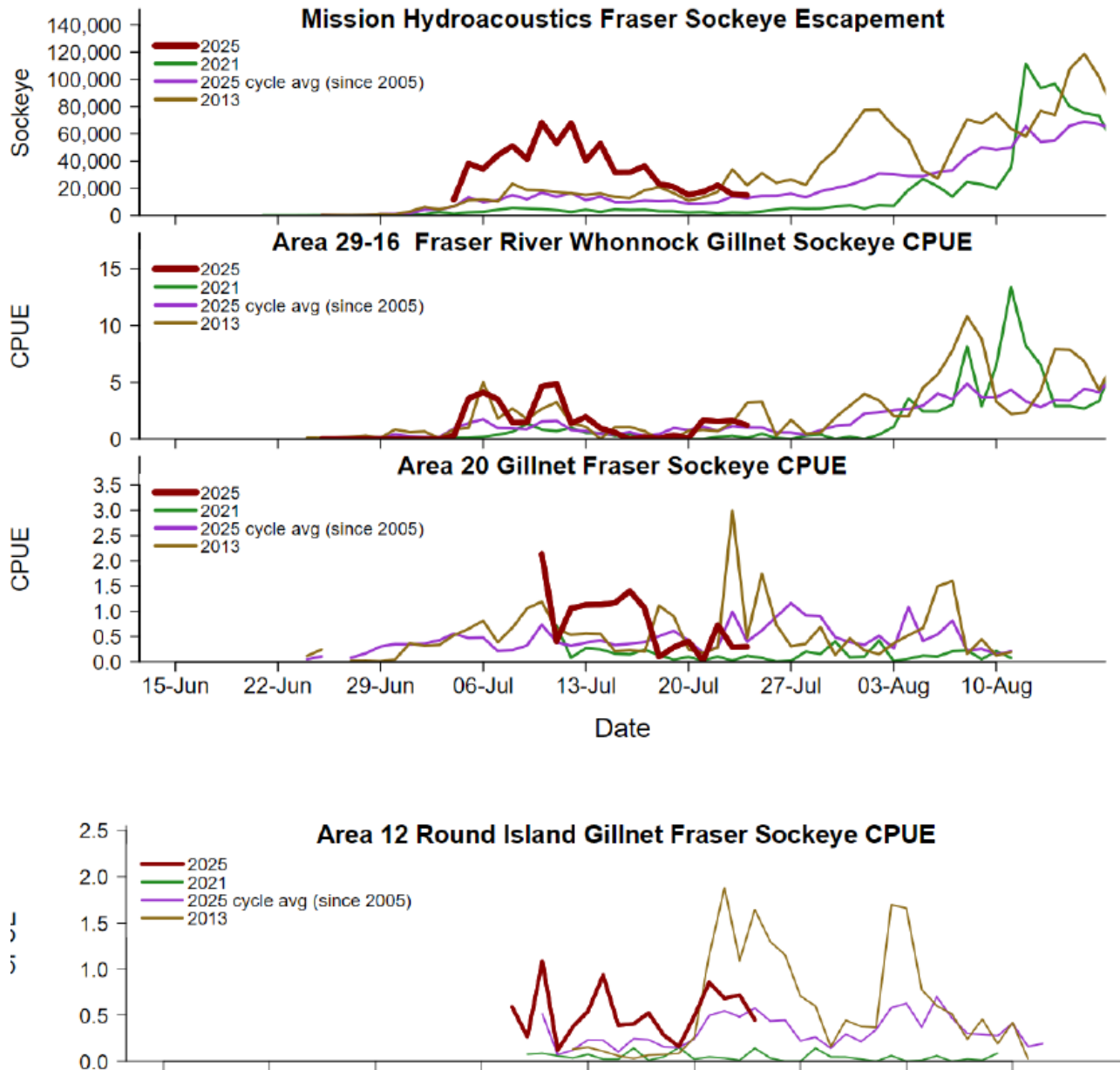
### Stock Proportions

- **Marine Area:** Marine samples for July 21 indicate 40 - 75% are Summers with E. Stuart trailing off and small amounts of E. Summers observed.
- **Fraser River:** In river samples for July 21 indicate E. Stuarts are trailing off and Summers and E. Summers are starting to build. Almost all fish are 4 YO.

### Chilcotin Slide Area Update

- Monitoring of the area is ongoing, weekly updates are provided to the FRP on Fridays
- Several small sloughing events have occurred in the area resulting in short-term increases in turbidity.
- Sonar stations are in place above the area to monitor potential passage delays. No passage delay conditions were observed during the week of July 25

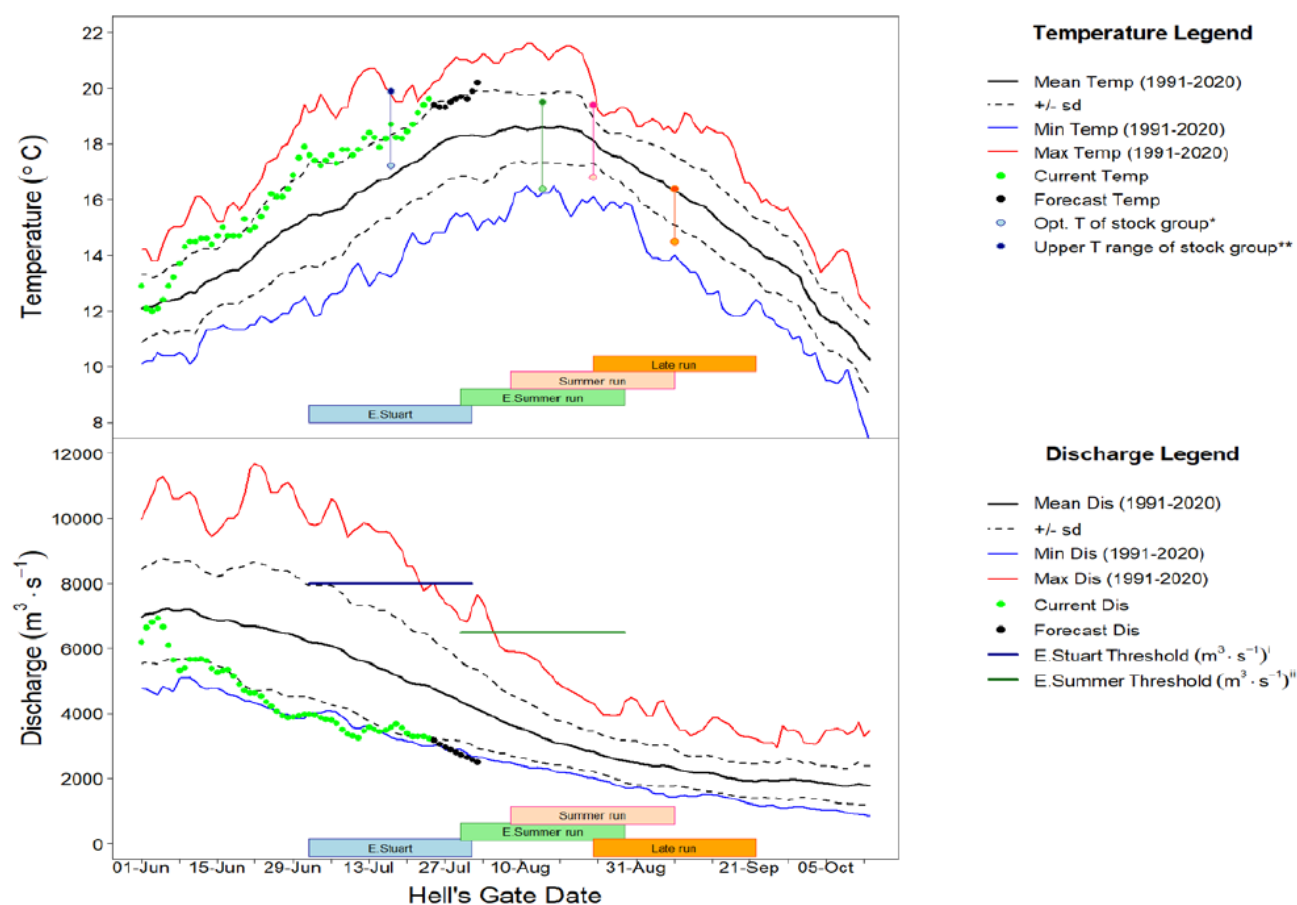




## Environmental Conditions and Management Adjustments

- The high temperature of the Fraser River at Qualark on July 24 was 19.6°C, which is 1.9°C above average. Temps are projected to increase across the watershed over the weekend.
- The Fraser River discharge at Hope was 3,250 m<sup>3</sup>/s, which is approximately 33% lower than historical average. Discharge is not posing passage issues at this time.
- High water temperatures combined with low discharge are expected to increase on-route loss as the season progresses.

## Fraser River Migration Conditions



## Observations Throughout the Watershed

- Catches from Qualark and mid-river inspections indicate the majority of fish (>90%) are in good condition with no signs of marks or damage.

## Assessments and Recommendations

### Early Stuarts

- Returning higher than expected but migration conditions declined over the past week. An in-season run size of 725,000 with a pMA of 1.86 was adopted on July 18.

### Early Summers

- No changes to preseason estimates

### Summers

- No changes to preseason estimates

### Lates

- No changes to preseason estimates

Management Group	Run Size	Timing A20 50%date	Proportional Mngt. Adjust. <sup>a</sup>	Available Harvest <sup>b</sup>	Allowable Incidental Harvest <sup>c</sup>
Early Stuart (Pre-Season)	116,000	8 July	1.17	0	11,600
<b>Early Stuart (Adopted In Season)</b>	<b>725,000</b>	<b>6 July</b>	<b>1.86</b>	<b>0</b>	<b>72,500</b>
Early Summers (Pre-Season)	220,000	3 Aug	0.54	9,600	N/A
<b>Early Summers (Adopted In Season)</b>	<b>No Change</b>	<b>No Change</b>	<b>No Change</b>	<b>No Change</b>	<b>No Change</b>
Summer (Pre-Season)	2,137,000	15 Aug	0.28	235,000	N/A
<b>Summer (Adopted In Season)</b>	<b>No Change</b>	<b>No Change</b>	<b>No Change</b>	<b>0</b>	<b>No Change</b>
Late (Pre-Season)	468,000	20 August	1.56	0	46,800
<b>Lates (Adopted In Season)</b>	<b>No Change</b>	<b>No Change</b>	<b>No Change</b>	<b>0</b>	<b>No Change</b>

<sup>a</sup> Proportional Management Adjustment is multiplied by the escapement target to calculate the numerical management adjustment.

<sup>b</sup> Available harvest after deductions. Harvest includes all catch in all fisheries in Canada the United States and test fisheries. CTAC will be assessed in-season.

<sup>c</sup> Incidental allowable harvest in a LAER scenario. Incidental harvest is not a target and would be considered a maximum, includes test fishery catch and may include fishery induced mortalities.

## **Fishery Recommendations**

- no panel area fishery recommendations are being considered at this time.

## **Other Business**

- 2025 Fraser River Panel Management Plan (formerly principles and constraints document) was adopted by Canadian and American caucuses

## **Next Meeting**

- Next Panel meeting is July 29, 2025.
- First Panel Tech meeting is July 31, 2025.