

Fraser River Sockeye In-season Update –Aug 5, 2025

The below is a summary of the Aug 5 Fraser Panel Meeting. For specific details please refer to the Fraser Panel distribution from the call. This is the 8th in-season update of 2025. Mission hydroacoustic and marine and in-river test fisheries have been running for a month now with recent seines showing continued strong results. Strong, early-season returns for Early Stuarts were observed across the assessment programs, with variable migrations conditions experienced by this stock. On July 18, the Panel adopted an in-season Early Stuart run size of 725,000 with a pMA of 1.86. On August 1, the Panel adopted an in-season Early Summer run size of 300,000 with a pMA of 0.54. Today, on August 5, the Panel adopted an in-season Summer run size of 4,000,000 which is slightly lower than the p75 forecast, with no changes to pMA. Pinks are also building in marine waters with strong early catches. Water temperatures are above average and discharge remains near record lows; continued high temperature could further increase en-route loss. Information will be further evaluated during the Technical Committee meeting on Aug 7. If you have any questions or notice any errors in the summary, please contact Maxime.Veilleux@dfo-mpo.gc.ca so that adjustments can be made.

2025 Run Status of Fraser Sockeye and Pink Salmon:

The information presented in this distribution has been prepared by PSC Secretariat staff and should be considered preliminary until reviewed by the Fraser River Panel

Week of: Aug. 3 - Aug. 9, 2025	Sockeye				Pink	
	Management Group				Total	Total
	E.Stuart	E.Summer	Summer	Late	Fraser	Fraser
Mission passage (inclds Pitt, Alouette, Coquitlam)	731,900	150,800	559,800	11,500	1,454,000	4,000
Catch downstream of Mission	3,900	2,100	22,200	2,100	30,300	900
Accounted Run To Date	735,800	152,900	582,000	13,600	1,484,300	4,900
Run size adopted in-season ¹	725,000	300,000	na	na	na	na
Run size forecasted pre-season	116,000	221,000	2,136,000	468,000	2,941,000	26,965,000
Area 20 timing adopted in-season	6-Jul	29-Jul	na	na	na	na
Area 20 timing expected pre-season	8-Jul	3-Aug	15-Aug	20-Aug	14-Aug	21-Aug
Johnstone Str. Diversion Rate					In-season 5-day average	64%
					Preseason forecast of annual rate:	64%
						17%
						73%

¹ Run sizes are usually not adopted until after the peak of the run has passed through marine test fishery areas in Juan de Fuca and Johnstone straits.

- Total Sockeye accounted run to date is 1.5M Fraser Sockeye of which 736K are Early Stuarts, 153K are Early Summers, 582K are Summers and 14K are Lates. Pink accounted run to date is 5K.
- The Early Stuart run size has exceeded the p90 forecast. Abundance in the marine and lower river has dropped off; no further updates to this MU are expected.
- Early Summers are tracking above the p50, with an adopted in-season run size of 300K.

- Summers are tracking close to the p75, with an adopted in-season run size of 4M which is just below the pre-season p75 forecast of 4,748,888.
- Lates are starting to show up in marine test fisheries, and to a smaller extent, in the in-river test fisheries.
- 64% of Sockeye and 17% of Pinks are migrating through Johnstone Strait.

In-season Data Flow

Acoustics

- **Qualark:** Hydroacoustics have been running since July 2 with strong results. Average daily passage began strong (>1,000) increasing to 63K with recent passage increasing again as Summers build in the river.
- **Mission:** Counts also started strong, increasing with an early peak of 67K on July 10 followed by a decline to 15K by July 20. Recent passage has been increasing steadily to 133K as Summers build in river.

Test fishing catch

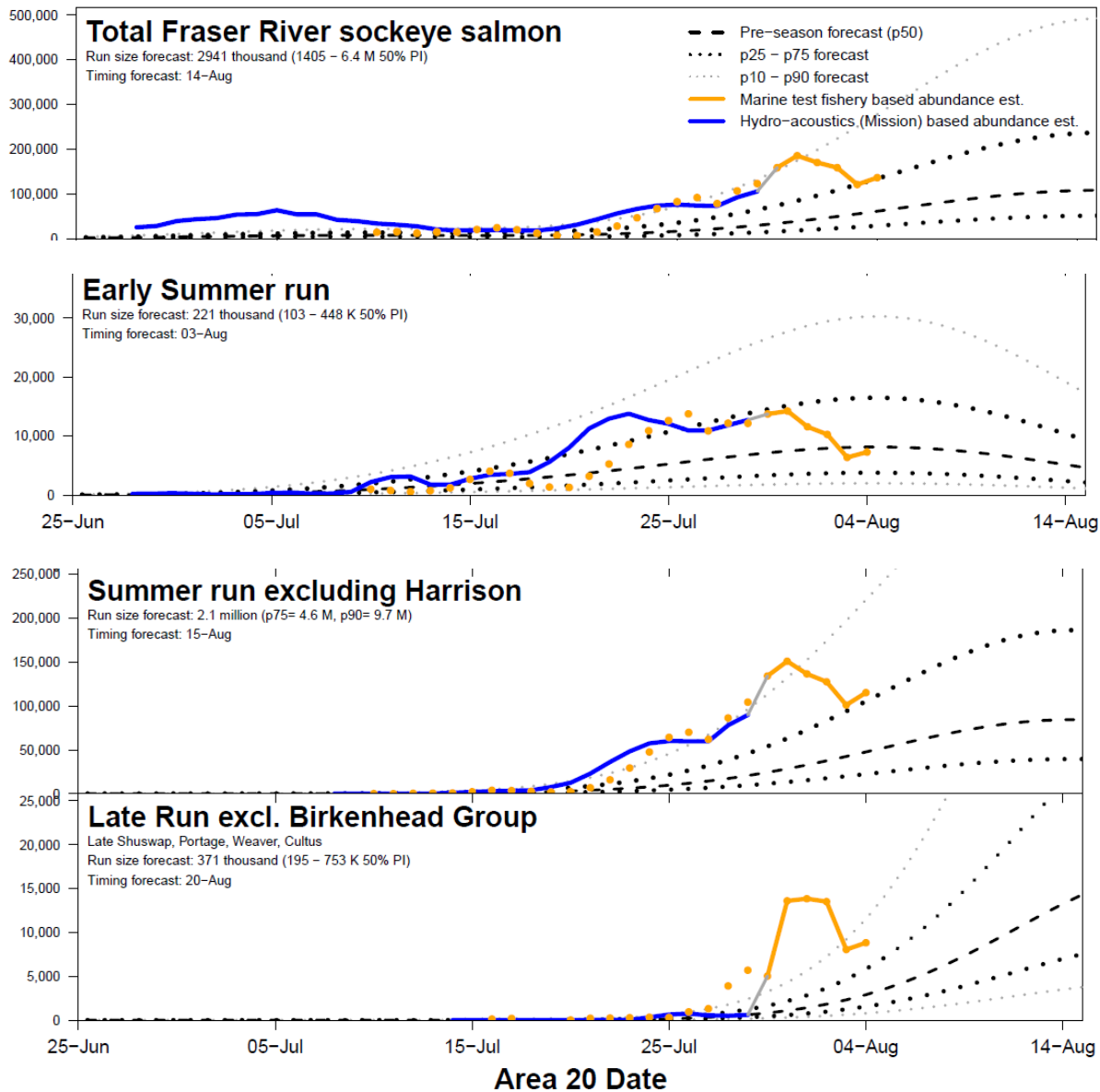
- **Marine Area:** A12 GN started July 8 with a peak catch of 69 on July 10 followed by declining catches with recent catches picking up as Summers build. A12 GN terminated on August 3. A12 purse seine started on July 24 with strong catches in its first few days with recent catches exceed expectations (15K on July 31). A20 GN started July 10 with strong catches (200 – 300) early on with recent increases; A20 GN terminated on August 5. A20 purse seine started on July 25 with strong catches with recent increases.
- **Fraser River:** Whonnock is operational as of June 25 with strong early catches, followed recent variable catches. Brownsville catches also began strong on July 10 (207) as Early Stuarts moved through, and have increased again as Summers build in river.

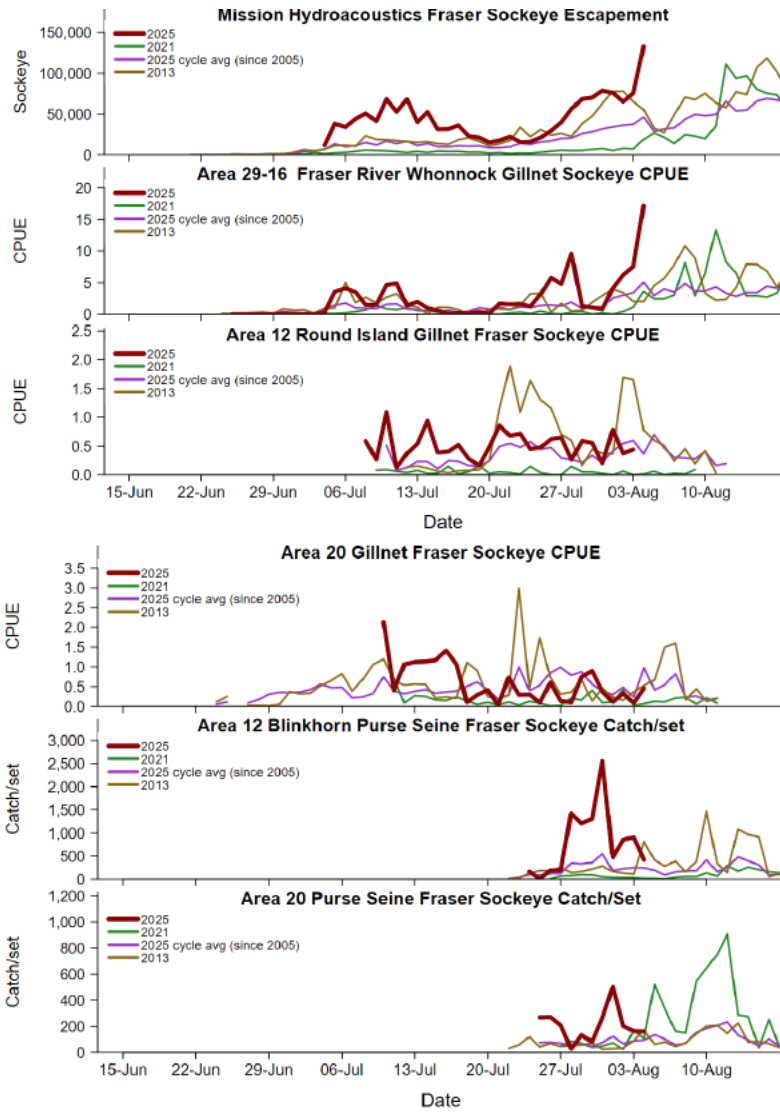
Stock Proportions

- **Marine Area:** Marine samples for July 30 – August 3 indicate 4-10% Early Summers, 87-90% Summers, and 0-9% Lates observed. Almost all fish are 4 year olds.
- **Fraser River:** In-river samples for August 1-3 indicate 10-23% Early Summers, 76-89% Summers, and 1% Lates. Almost all fish are 4 year olds.

Chilcotin Slide Area Update

- Monitoring of the area is ongoing, weekly updates are provided to the FRP on Fridays
- Several small sloughing events have occurred in the area resulting in short-term increases in turbidity.
- Sonar stations are in place above the area to monitor potential passage delays. No passage delay conditions were observed during the week of July 25.

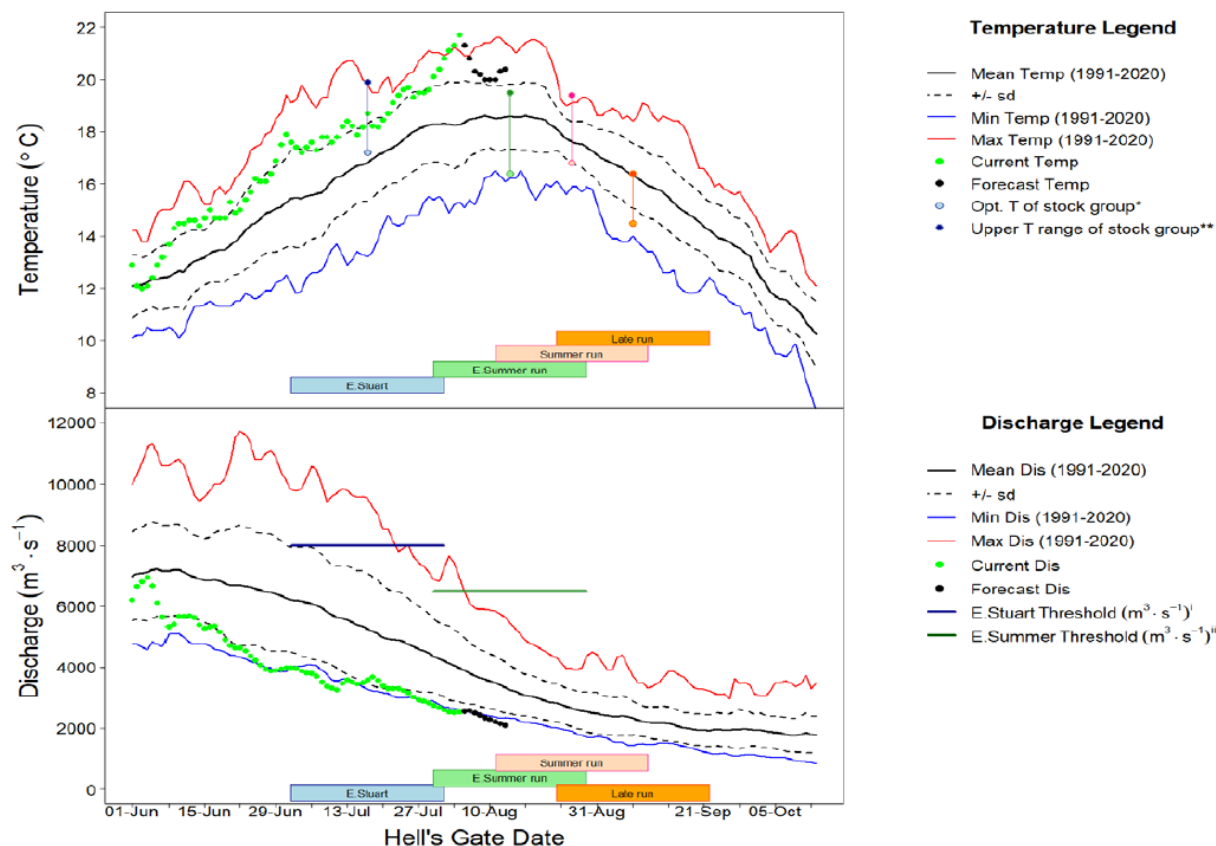




Environmental Conditions and Management Adjustments

- The temperature of the Fraser River at Qualark on Aug 4 was 21.7°C, which is 3.4°C above average. Temperatures are projected to decrease slightly during the next week.
- The Fraser River discharge at Hope was 2,535 m³/s, which is approximately 36% lower than historical average. Discharge is not posing passage issues at this time.
- High water temperatures combined with low discharge are expected to increase on-route loss as the season progresses.

Fraser River Migration Conditions



Observations Throughout the Watershed

- Updates are provided on Fridays. Catches from Qualark and mid-river inspections indicate the majority of fish (>90%) are in good condition with no signs of marks or damage.

Assessments and Recommendations

Early Stuarts

- Returning higher than expected but migration conditions declined over the past week. An in-season run size of 725,000 with a pMA of 1.86 was adopted on July 18.

Early Summers

- An in-season run size of 300,000 with a pMA of 0.54 was adopted on Aug 1.

Summers

- An in-season run size of 4,000,000 was adopted on Aug 5. No changes to the pMA.

Lates

- No changes to preseason estimates

Management Group	Run Size	Timing A20 50%date	Proportional Mngt. Adjust. ^a	Available Harvest ^b	Allowable Incidental Harvest ^c
Early Stuart (Pre-Season)	116,000	8 July	1.17	0	11,600
Early Stuart (Adopted In Season)	725,000	6 July	1.86	0	72,500
Early Summers (Pre-Season)	220,000	3 Aug	0.54	9,600	N/A
Early Summers (Adopted In Season)	300,000	July 29	0.54	69,000	No Change
Summer (Pre-Season)	2,137,000	15 Aug	0.28	235,000	N/A
Summer (Adopted In Season)	4,000,000	11 Aug	No Change	1,440,000	No Change
Late (Pre-Season)	468,000	20 August	1.56	0	46,800
Lates (Adopted In Season)	No Change	No Change	No Change	0	No Change

^a Proportional Management Adjustment is multiplied by the escapement target to calculate the numerical management adjustment.

^b Available harvest after deductions. Harvest includes all catch in all fisheries in Canada the United States and test fisheries. CTAC will be assessed in-season.

^c Incidental allowable harvest in a LAER scenario. Incidental harvest is not a target and would be considered a maximum, includes test fishery catch and may include fishery induced mortalities.

Fishery Recommendations

- No Canadian Panel-area fishery recommendations are being considered at this time.
- See FRP Regulatory Announcement for US fisheries.

Other Business

Next Meeting

- Next Panel meeting is Aug 8, 2025.
- Next Panel Tech Committee meeting is Aug 7, 2025.